



**STEM EDUCATION**

**workspace**  
commercial furniture







# CONTENTS

4. **What is STEM learning?**
5. **Stem Spaces**
6. **Seating**
7. *Cozy, Cozy Educational, Cozy 4 Star on Castor*
8. *Flex, Bika, Max*
9. *Hex, Kool, Strike*
10. *Flow, Quadra, Lucky*
11. *Plural, Glove, Jive*
12. *Dream, A Slim, HL3*
13. *Plaza, Plaza Drafting, Dot Pro*
14. *Trax, Tone, Tone Drafting*
15. *Tempo, Tempo Drafting*
16. **Stools**
18. *Qudra, Lucky, A-Slim bench stool*
19. *A-Slim Bar Stool, Asterisk, Askel, Pod*
20. **Benches**
21. *Kool Beam, HL3 Beam, A-Bench*
22. **Lounges**
23. *Hive, Mode, Cube, Round*
24. *Podi Lounge, Podi Club*
25. *Axis Chair, Axis Lounge*
26. **Booths**
27. *Domain, Room*
28. **Custom Solutions**
29. *Curve Pod, Laboratory Benches*
30. **Tables**
31. *Up, Verve, Break*
32. *Asterisk, Logos, Culture*
33. *Tetra, Drive, Studio*
34. *Balance, Track, Travel*
36. **Storage**
37. *Lockers, Alpine, Bondi, M-Collection*
- 38 - 39. **Projects: Christies Beach High School**
- 40 - 41. **Projects: Southern Cross University - Lismore**
- 42 - 43. **Projects: Hamilton Secondary School**
- 44 - 45. **Projects: Granville Tafe - NSW**
- 46 - 47. **Projects: Swinburne University - Latelab**
- 48 - 49. **Educational Sector**
- 50 - 51. **Workspace Commercial Furniture**



# WHAT IS STEM LEARNING?

STEM education is the learning of science, technology, engineering and mathematics in an interdisciplinary or integrated approach. Restoring the focus on STEM subjects is about ensuring Australia's young adults are equipped with the necessary skills for the economy of the future.

STEM is important for future generations because future jobs will require problem solving skills, innovative and creative thinking and digital skills. Future generations need to learn how to think critically and flexibly in order to adapt to this rapidly changing world.

With a heavy focus on education, Workspace has always believed that educational spaces should work as hard as the educators themselves. The spaces should spark imaginations, nurture and develop creativity, support a diverse range of learning activities and above all, support a diverse range of learners.

Here at Workspace our spaces do just that. They encourage exploration and support independent learning, collaboration, and creativity – today, and long into the future. Our awardwinning spaces are intuitive by design, facilitative by intent.

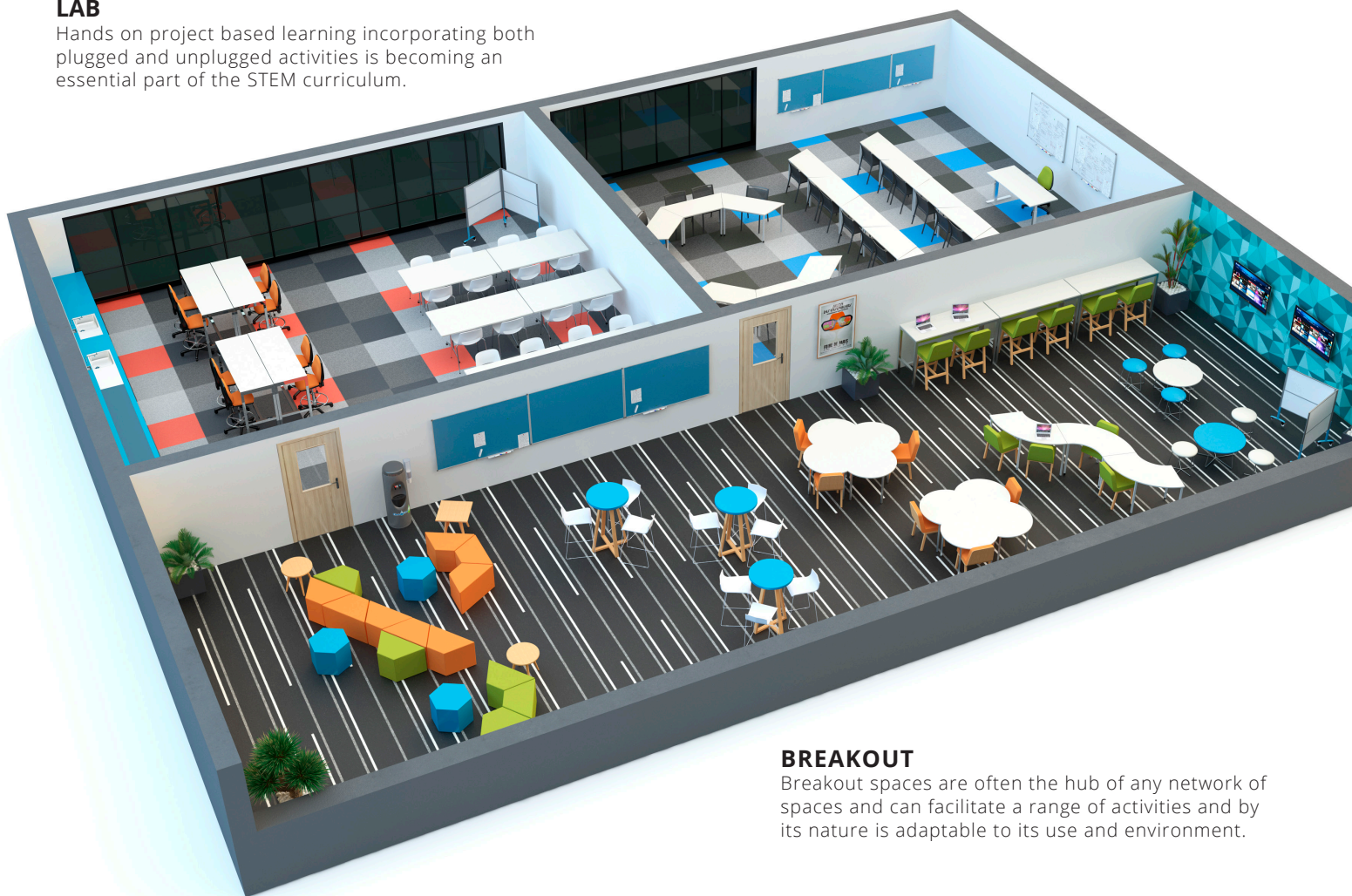


## CLASSROOM

Every collection is considered for its ability to reconfigure in multiple ways and accommodate full class sizes for informative discussions.

## LAB

Hands on project based learning incorporating both plugged and unplugged activities is becoming an essential part of the STEM curriculum.



## BREAKOUT

Breakout spaces are often the hub of any network of spaces and can facilitate a range of activities and by its nature is adaptable to its use and environment.



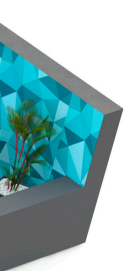


## BREAK OUT

Agile and interactive environments, allowing 'blue sky' thinking! A cross promotion of personal and collective spaces utilising Hive Ottomans, allow users to free form the space they want to work in. Custom design and manufactured bean bags, lounges and ottomans on castors invite structured space and the option for easy interchangeability to open plan. Technology integration into work surfaces and visual review platforms support content sharing and visual learning

## CLASSROOM

Adaptable FFE supports a collaborative classroom environment. The flexibility to utilise seating options such as Kool, HL3 and Flex with castor options matched with Balance customisable tables facilitate student movement, group collaboration and dedicated space creation. Moveable whiteboards, operable walls and writable desk surfaces, provide a platform for free thought, creativity and teamwork.



## LAB

Durability and flexibility of specialised FFE, with consideration to mobility and surface functionality and resilience are key. The requirement for FFE appears to have the strength of fixed joinery, with the flexibility to move, create space, whilst support specific learning environments. Custom mobile workbenches paired with Tempo drafting stools, matched with dedicated Balance tables, task and general chair areas, underpin the multi-use nature of the Lab. No longer the domain of a limited collection of lessons the Lab is an area for all aspects of STEM to thrive.





**SEATING**





## COZY

Designed for the modern office environment and the broad target audience the Cozy Chair provides extra comfort and advanced ergonomics. The open lumbar area and flexible back allow a user to sit in the most comfortable posture. Inner structure of the back cushion follows the body's natural movement and maximized flexibility. The Cozy chair is adaptable to a large variety of different leg frames and configurations. Cozy is a perfect chair for any work space.

### Range

4 Leg chair  
Star base with castors  
Sled base

### Options

With or without arms  
Metal frame  
Black polypropylene shell  
With or without castors (4 leg only)

### Features

Custom upholstery options  
Distinctive open lumbar design  
Multi-functional  
Back cushion fits human body curve



## COZY EDUCATION

Designed for the everyday educational environment and the broad target audience the Cozy Education Chair provides extra comfort and advanced ergonomics. The open lumbar area and flexible back allow a user to sit in the most comfortable posture. Inner structure of the back cushion follows the body's natural movement and maximized flexibility.

### Range

4 Leg Castor

### Options

Metal frame  
Black polypropylene shell  
Available in a wide range of fabric, leather or vinyl

### Features

Back cushion fits body curve  
Distinctive open lumbar design  
Multi functional with different bases fits easily into diverse environments  
Interchangeable tablet (left & right handed – rotates 270 degrees)  
Seat swivels 360 degrees  
Backpack/accessories tray



## COZY 4 STAR CASTOR

Designed for the modern office environment and the broad target audience the Cozy Chair provides extra comfort and advanced ergonomics. The open lumbar area and flexible back allow a user to sit in the most comfortable posture. Inner structure of the back cushion follows the body's natural movement and maximized flexibility. The Cozy chair is adaptable to a large variety of different leg frames and configurations. Cozy is a perfect chair for any work space.

### Range

4 Star base with castors  
4 Leg with castors  
Sled base  
4 Leg chair

### Options

With arms only  
(Other versions available with or without arms)  
Metal frame  
Black polypropylene shell  
Upholstery available in a wide range of fabric, leather or vinyl

### Features

Custom upholstery options  
Distinctive open lumbar design  
Multi-functional  
Back cushion fits human body curve







## FLEX

Flex; a modern office chair that combines the function of a training chair and meeting chair. With a flexible back mechanism the suspension backrest allows a 9 degree recline providing consistent and dynamic support to users in training or meeting circumstances. Suitable for general office, visitor, conference, meeting and educational environments, Flex by name and nature is the perfect flexible seating solution.

### Range

4-leg base, castors

### Options

With arms only  
Tablet arm  
Black mesh backrest  
Steel frame

### Features

Flips & nests for easy storage  
Polyamide seat & backrest support with glass fibre reinforcement  
Custom upholstery options



## BIKA

The Bika chair is a minimal slim line stackable seating option that is a game changer for the multi-purpose chair market. It's seemingly simple structure and soft aesthetic disguises a great innovation in design. Bika boasts a sleek monocoque frame that is strong, flexible and stylish. The slim design, smooth finish and defined lines give it a modern yet inconspicuous aesthetic. This frame accommodates interchangeable seat shells in a range of colours making it extremely customisable for the end user allowing them to exercise their creative needs. The versatile Bika chair is sure to be a favourite across a wide range of sectors.

### Range

4-leg base

### Options

Available in a range of 7 different standard colours and an indent of 3 colours (12-14 week wait time)

### Features

Polypropylene seat  
Polyamide structure frame with fiberglass load  
Polyethylene stacking stops  
Glides



## MAX

Max chair is the beautifully designed, well crafted and sophisticated all rounder of the seating world. This versatile chair boasts a sturdy steel frame that shoulders the ergonomic polypropylene seat. The mesh back provides maximum comfort and breathability while the back rest frame provides just the right amount of flexibility to enhance the seating experience and highlight the strength and quality of this fantastic piece of furniture.

### Range

4-leg base

### Options

With or without arms  
Tablet arms  
Black powder coat frame  
Upholstered seat pad  
Black mesh backrest

### Features

Breathable mesh backrest  
Horizontal stacking via male to female linking system  
Polypropylene seat







## HEX

The Hex range features a combination of lines which work in harmony to mould an origami style silhouette. The hexagonal design ensures product strength and certainty, whilst the upholstered lining adds comfort and colour. The chair footprint is generous to the user and compact enough to sympathise with any space. Ensuring continuity in any commercial environment the Hex family is available in swivel base with castors, 4 spoke fixed and sled base options. Hex the ideal chair solution for the modern commercial environment, with a functional and timeless quality.

### Range

Swivel  
Swivel, tilt lounge chair, castors, gas lift  
Sled base

### Options

Moulded foam upholstered seat  
Chrome or custom powder coat options for base  
Black shell

### Features

5 star base  
Polypropylene shell  
Gas lift adjustment



## KOOL

The Kool Chair by Forma 5 – Planned for classrooms, coffee and break-out areas and meeting rooms. Designed by Josep Llusca, it brings a dynamic and versatile look wanted in modern offices and aged care fit outs alike: a perforated polypropylene back rest, and a polypropylene seat available in a variety of attractive colours

### Range

4-leg base

### Options

With or without arms  
Multiple seat colours  
Upholster seat in range of fabrics, leathers or vinyls  
Polypropylene glides or castors

### Features

Writing pad  
Book rack  
Chair link  
Perforated Backrest



## STRIKE

Strike is a family of chairs with a modern design, simple and elegant at the same time, suitable for a wide variety of tasks and environments in contracting and community areas. The Strike monoshell is available in a wide range of colors with the frame in several versions. Its perforated backrest, folded origami like seat, and innovative frame which allows vertical stacking up to 15 chairs high, all make the Strike Chair a feature product that will define any space.

### Range

4 Leg (v configuration)  
Sled Base  
4 leg stool  
5 star base on castors; height adjustable, swivel

### Options

Upholstered seat in custom fabrics  
Multiple Colours  
With or without arms - (4 leg option only)

### Features

Chrome Frame  
Perforated, flexible backrest  
UV stabilised  
polypropylene monoshell







## FLOW

Flow is a fully upholstered stackable visitor chair with a chrome plated sled steel frame. The seat has a waterfall front for comfort and 25mm thick foam on seat and backrest. The seat and back have ribbed upholstery as a feature.

### Range

4-leg timber base  
Sled base

### Options

With or without horizontal ribs  
Timber leg  
Chrome frame

### Features

Custom upholstery options  
Nylon glides  
Waterfall seat front  
One piece laminated ply seat and back



## QUADRA

Quadra Chair is a light but strong, stackable chair that will look smart in any contemporary office. Made with a bent and welded, chromed frame that has extra fixing screws into a laminated beech shell, this range is available in several polish and upholstery finishes. Available as a four legged chair, sled chair, two stool height options and in partly or fully upholstered versions to complete the family, Quadra is the ultimate in versatility.

### Options

4 leg base  
Sled base  
Timber, Upholstered front or fully upholstered  
Clear, Wenge, Stained, or white 2-pac finishes for the ply seat shell  
Chrome (standard) or custom powder coat colour options for the frame.

### Features

Beech ply shell  
Chrome frames  
Custom upholstery options



## LUCKY

Lucky is a comfortable multi-purpose chair that is characterized by its formal lightness, essential design and exclusive two-colour finish. Qualified by a soft, flexible shape that adapts to the body well and follows its movements, the single-body structure in polypropylene has a differentiated surface with an anti-slip matt finish on the seat and a polished finish on the outside. A sophisticated but at the same time functional solution that gives the chair a sophisticated, fresh image that is accentuated by painstaking colour matches.

### Range

4-leg base  
Sled base  
Swivel chair  
Seat on beam

### Options

Optional upholstered seat pad  
With or without arms  
Writing pad  
Multiple seat and back colours

### Features

Chrome frames  
Self leveling feet with floor protection  
Contrasting finish  
polypropylene seat & back







## PLURAL

Plural stems from the desire to create a versatile and useful chair. It has two visitor chair structures – 4 leg and cantilever – that come in black epoxy or white finish. Both types of chair have an ergonomic mesh backrest in black or white. The optional armrests, the seat frame and the frame covered by the mesh are also available in the same colours, giving the chair a modern feeling.

### Range

4 leg base  
Cantilever base

### Options

With or Without arms  
White or black frame

### Features

Stackable 6 units high  
(15 units for 4 leg option)  
Custom upholstery options



## GLOVE

Glove, designed by Joseph Llusà for Forma 5, is a stylish, functional and versatile chair family. With its gently tapering timber leg and discrete aluminium fixing tray coupled with its versatile seat configurations the Glove suits both the home and office environments.

### Range

4-leg wooden base

### Options

Black, white or custom shell colour options  
Clear, custom stain, custom paint colour  
leg finishes  
Upholstered seat pad only  
Fully upholstered with  
back zip detail

### Features

Custom upholstery options  
Anti-sliding glides  
Moulded foam seat  
Perforated polypropylene seat



## JIVE

The Jive Chair, in its four legged form is a versatile addition to any shared space. As a meeting or visitor chair, it delivers every time on comfort and practicality. This is due to attention to detail from the design stage, right up to production. The Jive Chair is also stackable and comes with a range of upholstery options; with independent seat and backrest which can both be upholstered. To complete the Jive family – cantilever, drafting and even gas-lift swivel versions are also available.

### Range

Leg stackable chair  
Cantilever chair  
Drafting chair  
Beam-mounted seating  
5 star base with 60mm castors

### Options

Writing table  
Upholstered seat and back  
Upholstered seat and  
moulded back

### Features

Chrome frames  
Swivel action with gas  
height adjustment  
A stable high-arch





## DREAM

The Dream Chair by Cerantola lives up to its name in more ways than one. Like a dream, it appears in many forms and can adapt to the user's needs and moods. With multiple colours, materials and options, Dream Chair can be adapted to any personality, yet can be very personal and individual. With its perfectly contoured seat and backrest, optimal sitting height and angles; you won't want to get up from this Dream.

### Range

4-leg base, castors  
Cantilever

### Options

With or without arms  
Optional armrests  
Black, grey, white or red backrest and seat  
Upholstered backrest and seat with grey or black outer back  
Optional seat top and backrest front upholstered

### Features

Moulded plastic arms, seat and backrest  
Chrome frame, grey or black powdercoat  
Multiple backrest and seat options



## A SLIM

A-Slim Chair – a fresh evolution of the A-Series range, designed and manufactured exclusively by Workspace. A-Slim draws its design inspiration from the hugely successful A-Series range. Maintaining its straight lines, softened corners and visually striking white ash frame, A-Slim comprises a slim frame and seat profile, bolstered by the introduction of an aesthetically complementary and functional steel footrest. A-Slim provides the design without compromising on comfort and durability.

### Range

4-leg base

### Options

Clear varnish, stained or painted leg finish  
Black or custom powder coat finish

### Features

Custom upholstery options  
Solid Ash timber frames with mortise and tenon joinery  
Moulded ply monoshell  
Steel brace



## HL3

HL3 Chair for workplaces, for study, entertainment and group venues and the contract sector. Featuring innovative construction solutions to achieve extremely high standards of resistance and duration combined with lightness and comfort. The linear extension of the backrest below the seat makes it more elastic than a traditional structure allowing the seat to adapt to the movements and posture changes of the user. The unmistakably modern chair with a purity of form comes in different versions, complete with accessories and a wide range of materials, finishes and colours allowing you to customise each system to meet your exact project requirements.

### Range

4-leg base  
Tip-up on castors  
Swivel

### Options

Polished frames  
Tablet arm  
Linking mechanism  
Multiple colour or timber seat options  
Upholstered seat and back

### Features

Aluminium frames  
Black thermoplastic feet  
Manual seat rotation device



95% recyclable materials  
UUNI EN 1728 and BIFMA tested







## PLAZA

For those who need that extra level of ergonomic adjustment, the Plaza Elite Chair is the perfect solution. With independent seat and backrest tilt adjustment, the Plaza Elite takes the Plaza range into a higher category of task chair. Tested to AFRDI level 6, and with premium foams and your choice of fabrics, Plaza is a smart choice for small or large projects.

### Range

5 star base on castors

### Options

Medium or high back  
Fixed or adjustable arms  
With or without arms  
Nylon or Polished aluminium base

### Features

Gas height adjustment  
Seat & back tilt adjustment simultaneously  
Back height adjustment  
Custom upholstery options



## PLAZA DRAFTING

As far as durability, comfort and affordability in task chairs is concerned, the Workspace Plaza Drafting Chair is hard to beat. With its extra height and foot ring, the Plaza Drafting Chair has been designed for situations where a higher sitting position is required. Plaza Drafting Chair is a smart choice for small or large projects.

### Range

5 star base on castors

### Options

Nylon or aluminium base  
With or without arms  
Adjustable or fixed ring arms  
Medium or high back

### Features

Gas height adjustment  
Seat & back tilt adjustment simultaneously  
Back height adjustment  
Foot ring  
Custom upholstery options



## DOT PRO

The Dot.Pro Chair has been designed to reflect all current innovations in office chairs. Offering an innovative system that combines the use of highly resistant and flexible materials, Dot.Pro allows for flexible torsion in the upper part of the back while maintaining a firm grip on the waist. Through the use of highly functional and resistant materials, Dot.Pro is an optimal office chair suitable for continuous work and guarantees healthy freedom of movement.

### Range

5 star base, castors

### Options

With or without arms  
Adjustable 3D arms  
Black or Grey web mesh  
Custom upholstered front with black web mesh posterior  
Custom upholstered front with grey web mesh posterior  
Black polyamide, polished aluminium base

### Features

Seat + Synchro Motion mechanism  
Seat depth adjustment  
Flex lumbar support  
Double wheel castors  
Polyamide frame finish







## TRAX

Trax is a flexible chair, which adapts to any workplace. Designed with an advanced synchro mechanism featuring height, seat depth, seat back and tilt adjustments; Trax comes across as one of the most complete chairs in its range. With the option for mesh seat Trax ensures the optimum circulation to reduce sweating. The back support that defines the aesthetic line for the chair connects a height adjustable lumbar support to ensure comfort for all users. Trax is the perfect combination of operability and functionality.

### Range

5 star base on castors

### Options

Polyamide base  
3D arms or no arms  
Mesh or custom upholstered seat

### Features

Height adjustable lumbar support  
Back tilt adjustment with tension control  
Seat depth adjustment  
Gas height adjustment  
Mesh backrest



## TONE

Tone is an economical task chair from Bojie X (China). It has a rigid plastic framed mesh backrest and a plastic base, with moulded foam seat. It can be upholstered by Workspace, or be supplied with the standard buy in black fabric. It has a 10 year warranty.

### Range

5 star base on castors

### Options

Polyamide or aluminium base  
Fixed arms  
Black or custom colour upholstery

### Features

Torsion bar controlled tilting back  
Seat depth adjustment  
Fixed height or height adjustable version  
Mesh back



## TONE DRAFTING

The Tone Drafting is the perfect drafting chair utilising the components from the Tone Chair along with extra height and foot ring. The Tone Drafting chair has been designed for situations where a higher sitting configuration is required. The rigid plastic framed mesh backrest and a plastic base with moulded foam seat has been taken from the original Tone chair allowing a simplistic yet versatile drafting chair for all scenarios.

### Range

5 star base on castors

### Options

Polyamide or aluminium base  
Fixed arms  
Black or custom colour upholstery

### Features

Torsion bar controlled tilting back  
Seat depth adjustment  
Fixed height or height adjustable version  
Mesh back







## TEMPO

Tempo Chair is the chair to suit just about every user, whether for clerical and keyboard tasks or for meetings and management. Its European design provides the complete range of adjustments needed to allow each chair to correctly fit the individual user. It is easy to operate and its synchronised tilt operation can be left in free-floating mode or locked into position for a particular task at the push of a button

### Range

5 star swivel base

### Options

Aluminium or high-arch base  
With or without arms  
Fixed ring or height  
Adjustable arms  
Low, medium, high back

### Features

Height adjustable  
Adjustable lumbar support,  
seat tilt ,seat depth and  
backrest tension  
Adjustable seat and arm height  
Custom upholstery options



## TEMPO DRAFTING

The Tempo Drafting Chair is the perfect combination of the original Tempo chair along with its extra height and foot ring, the Tempo Task Drafting Chair has been designed to deliver maximum ergonomic comfort at elevated sitting heights, without compromising on comfort or style. Its European design provides the complete range of adjustments needed to allow each chair to correctly fit the individual user. It is easy to operate and its synchronised tilt operation can be left in free-floating mode or locked into position for a particular task at the push of a button

### Range

5 star swivel base  
Foot Ring

### Options

Aluminium or high-arch base  
With or without arms  
Fixed ring or height  
Adjustable arms  
Low, medium, high back

### Features

Height adjustable  
Adjustable lumbar support,  
seat tilt ,seat depth and  
backrest tension  
Adjustable seat and arm height  
Custom upholstery options







# STOOLS

University of South Australia, SA





## QUADRA

Quadra Chair Timber is a light but strong, stackable chair that will look smart in any contemporary office. Made with a welded, chromed frame that has extra fixing screws into a laminated beech shell, these chairs are available in several polish and upholstery finishes. The quadra is also available as a sled chair, or stool and in partly or fully upholstered versions to complete the family.

### Range

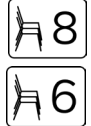
Sled Base Stool

### Options

Beech, wenge, custom stain,  
2 pac white finishes  
Full or front upholstery  
Chrome or custom powder coat finish  
High or low stool

### Features

Custom upholstery options  
Floor protecting nylon glides



Sled/4-leg

Stool

## LUCKY

With its dual surface finish and polished chrome frame, The Lucky Stool delivers everything it's younger sibling the Lucky Chair has to offer in style and practicality – with the added bonus of a sled stool frame. Its front surface is a white matte finish which keeps you in place on the seat, while the back surface is a contrasting high gloss finish in white black or red that makes the Lucky Stool stand out from the crowd.

### Range

Stool sled base

### Options

Writing pad  
With or without arms  
Black, white, red and custom colour seat and backrest options  
Seat pad upholstery options

### Features

Stackable  
Chrome frame  
Self leveling feet with floor protection  
Contrasting finish polypropylene seat & back



## A-SLIM BENCH STOOL

A-Slim Bench Stool – a fresh evolution of the A-Series range, designed and manufactured exclusively by Workspace. A-Slim draws its design inspiration from the hugely successful A-Series range. Maintaining its straight lines, softened corners and visually striking white ash frame, A-Slim comprises a slim frame and seat profile, bolstered by the introduction of an aesthetically complementary and functional steel footrest. A-Slim provides the design without compromising on comfort and durability.

### Range

4-leg bench stool

### Options

Clear varnish, stained or painted leg finish  
Black or custom powder coat finish

### Features

Custom upholstery options  
Solid Ash timber frames with mortise and tenon joinery  
Moulded ply monoshell  
Steel brace







## A-SLIM BAR STOOL

A-Slim Bar Stool – a fresh evolution of the A-Series range, designed and manufactured exclusively by Workspace. A-Slim draws its design inspiration from the hugely successful A-Series range. Maintaining its straight lines, softened corners and visually striking white ash frame, A-Slim comprises a slim frame and seat profile, bolstered by the introduction of an aesthetically complementary and functional steel footrest. A-Slim provides the design without compromising on comfort and durability.

### Range

4-leg bar stool

### Options

Varnish, stained or painted leg finish  
Black or custom powder coat finish

### Features

Custom upholstery options  
Solid Ash timber frames with mortise and tenon joinery  
Moulded ply monoshell  
Steel brace



## ASTERISK

Asterisk is a range of bent solid steel rod low height tables and a stool which is comprised of a small and large frame. Named after the 5 sided star base which looks like an asterisk on a keyboard.

### Range

Low Stool  
Bar stool

### Options

Chrome, black and white powder coat and custom powder coat base options  
Pine ply or custom upholstered seat options

### Features

Steel rod frame  
No slip hard wearing glides



## AKSEL

Aksel provides a fun and interactive seating experience with its 360 degree balance base that helps to promote movement and good posture. The Aksel also comes fitted with gas lift height adjustment operated via an easy lift lever making it a very versatile seating option for wide variety of users and seated tasks. The upholstered seat pad is not only comfortable but customisable with a wide range of fabric options available.

### Range

Balance Stool

### Options

Custom upholstery seat options  
Dark grey base, shell, lift handle  
Light grey seat shell

### Features

Polypropylene shell and base plate  
360 degree balance base  
Gas lift height adjustment



## POD

The Pod Stool is our answer to a common need. A stylish yet minimal stool which can be toned down to blend into it's environment, or made to stand out with custom upholstery. In addition to this is the gas lift, which allows Pod to be raised or lowered to meet individual users needs. Pod Stools are also available with an optional foot ring, with or without castors, and a taller drafting version.

### Range

Gas Lift Stool

### Options

With or without castors

### Features

Height adjustable  
Custom upholstery options









# BENCHES



Kool Beam Seating, 3 Seater



## KOOL BEAM

The Kool chair range, designed by Josep Llusçà from Forma 5, is also available as Kool Beam Seating with a refined leg design. With a polished cast base, integral steel beam and Kool Chair's black or white perforated backrest and moulded seat, the Kool Beam Seating is built for durability and style. Available in all colours, and with optional side table; Kool Beam Seating can be customised to suit a wide range of situations and styles.

### Range

Beam seating: 2- 5 seat

### Options

Black or white frame  
Aluminium or custom powder coat base options  
Multiple colour or custom upholstery seat options  
With or without arms  
Table

### Features

Polypropylene seat pad and frame  
Cast aluminium leg  
Perforated polypropylene backrest  
Cylindrical polypropylene supports



## HL3 BEAM

HL3 Beam Seating- European designed multi-purpose seating system for workplaces, education, entertainment or convention venues and the contract sector. Featuring innovative design to achieve extremely high standards of resilience and durability combined with lightness and comfort. The linear extension of the backrest below the seat makes it more elastic than a traditional structure allowing the seat to adapt to the movements and posture changes of the user.



### Range

Beam seating: 2-4 seat

### Options

Laminated beech, natural beech or wenge beech tone finish.  
White matt, anti-slip surface on the seating side and black polished surface on the back.  
White, grey & red backs also available on request.  
Custom upholstery for seat and back

### Features

Seat & backrest support  
Square-section, painted, extruded aluminium beam  
Fitted with two, three or four seats.



95% recyclable materials  
UUNI EN 1728 and BIFMA tested



## A-BENCH

A-Bench provides another element of flexibility to this product family expanding its applications to include education, hospitality, retail and health sectors. Once again the simple timber "A" frame design coupled with the customisable upholstery options makes the A-Bench seamlessly integrate into any environment it occupies.

### Range

2 seater Bench

### Options

Clear polish, stained or custom painted finish

### Features

Features Solid Ash timber frames with mortise and tenon joinery  
Custom upholstery options





# LOUNGES







## HIVE

This is the idea behind Hive; Components can be removed, added, rearranged and grouped to form smaller hives or individual units. The hexagonal tables act as the central hub of the system and by their design, they naturally encourage collaboration. The design of the system also facilitates in minimising the footprint used and re-purposing the floor area for different uses.

### Range

Coffee table  
Ottomans: triangle, parallelogram, rhomboid  
LH and RH corner lounge

### Options

Corner, parallelogram, triangle, trapezoid table options  
American white oak or custom veneer table finishes  
Clear polish or stained table finish

### Features

100% Australian designed and manufactured  
Designed in house by Workspace  
Many shapes and configurations  
Lightweight ottomans  
Custom upholstery options



## MODE

Comprising of ten separate module options, including seats, back and armrests, square stools and two sizes of coffee tables; Mode can be transformed into more than 35 distinct and individual layouts. This means that Mode is only limited by your imagination.

### Range

Square ottoman  
Square coffee table: small and large  
Straight back: short/ long centre  
S Back  
Corner back

### Options

White or custom powder coat base options  
With or without backrests  
Square stool  
Full or half size table, upholstered base  
Parchment melamine, veneer, or prefinished board options

### Features

Modular lounge system, with many different configurations  
Square welded steel tube under frame, leveling feet  
Solid timber and ply construction  
Injection moulded polyurethane seat and backrest cushioning  
Custom upholstery options



## CUBE

The Cube Ottoman is about as simple and practical as breakout furniture gets. This is a staple for breakout areas, waiting rooms and anywhere else it is needed. Group the Cube Ottoman with our Round Ottomans and occasional tables to create a vibrant and adaptive breakout space

### Range

Cube ottoman

### Options

Glides or steel zen feet option

### Features

Lightweight construction  
Custom upholstery options



## ROUND

Sometimes in a project it's the final touches that really make a difference. Our Round Ottoman is an easy way to liven up a space and add colour and shape. The lightweight Round Ottoman is versatile; It can pop out with contrast, or sit waiting in the background to be called on when needed. Mix and match different sized Round Ottomans with veneer and cube ottomans to create a fun, practical space

### Range

Round ottoman

### Options

FSC certified timber veneers, finished in durable 2 pack lacquer, or brushed stainless steel  
Stainless steel stub feet option for square ottoman  
Veneer and cube versions

### Features

Nylon glides  
Custom upholstery options  
Timber construction  
Upholstered over blocks of cfc-free urethane foam





## PODI LOUNGE



Single Seater

Podi Lounge is another of our compact lounges, its contemporary square style perfectly complementing the modern office environment. This is the perfect choice for breakout areas or waiting rooms, where size does matter, along with comfort and durability.

### Range

1, 2 or 3 seater options  
Podi Club (without arms)

### Options

Available in a wide range of fabrics, leathers or vinyls  
(Multiple fabrics may be selected for a two tone look)  
Chrome plated cast zinc feet

### Features

Timber construction  
Chrome plated cast zinc feet  
Nylon glides to protect floors  
Leather or fabric upholstery  
Available in contrasting fabrics



3 Seater



2 Seater

## PODI CLUB

The Podi Club is another of our compact lounge chairs, its contemporary square style perfectly complementing the modern office environment. This may be the perfect choice for breakout areas or waiting rooms, where size does matter, along with comfort and durability. Podi Club can stand alone or compliment Podi one or two seater lounges. Its compact design allows Podi Club to fit where other lounges can't. By intermittently placing Podi and Podi club, you can create an adaptive, space efficient project.



### Range

1 Seater  
2 Seater with arms

### Options

Available in a wide range of fabrics, leathers or vinyls  
(Multiple fabrics may be selected for a two tone look)  
Chrome plated cast zinc feet

### Features

Timber construction  
Chrome plated cast zinc feet  
Nylon glides to protect floors  
Leather or fabric upholstery  
Available in contrasting fabrics



# AXIS CHAIR

With its subtle curves and high quality materials, our Axis chair and lounge provide style, comfort and elegance to any interior. Add to this the choice of chromed solid steel in your selection of finish or a timber under frame and additional headrest in the single seater version only; Axis can change to suit you or your client's needs.

## Range

Chair  
Chair with Headrest  
2 Seater (Chrome solid steel frame only)

## Options

Leather or Fabric Upholstery  
Available in a wide range of fabrics, leathers or vinyls  
Multiple fabrics may be selected for a two tone look  
Chrome Frame  
Powder coat colours available on request  
Timber Frame

## Features

Steel Construction  
Chrome plated solid steel rod frame  
Nylon glides to protect floors  
Cushion available in contrasting fabric



# AXIS LOUNGE

With its subtle curves and high quality materials, our Axis lounge provides style, comfort and elegance to any interior.

## Range

Chair (steel or timber frame)  
Chair with Headrest (steel or timber frame)  
2 Seater (Chrome solid steel frame only)

## Options

Leather or Fabric Upholstery  
Available in a wide range of fabrics, leathers or vinyls  
Multiple fabrics may be selected for a two tone look  
Chrome Frame  
Powder coat colours available on request  
Timber Frame

## Features

Steel Construction  
Chrome plated solid steel rod frame  
Nylon glides to protect floors  
Cushion available in contrasting fabric







# BOOTHS

Swinburne University, VIC





## DOMAIN

Introducing Domain, the compact work hub for any application. The Domain Pod features a rotating seat within built storage. The rotating seat improves accessibility and comfort while the storage provides a place to keep your belongings safe. The compact laminate work-surface and pod base provides robust yet sleek surfaces that are tough enough to handle level 6 commercial use.

### Range

LH pod  
RH pod

### Options

Left hand or right hand options  
Single seat pod  
Compact laminate solid colour or custom colour finishes available

### Features

Rotating seat with built in storage  
Compact laminate work-surface  
Custom seat and screen upholstery options



## ROOM

Room is the ideal acoustic space for the individual, coworkers or teams to occupy informally or formally. A space for quiet reflection or collective consultation. Single and Double booth options are ideal for any commercial application and provide flexibility to transform any space into an intimate and enjoyable environment. Freedom of finishes, compliments the freedom to change your space to suit user needs.

### Range

Single seat booth  
Double seat booth

### Options

1 seater or 2 seater option  
Adjustable leveling feet

### Features

Timber construction  
Chrome plated steel tube under frame  
Continuous armrest and lumbar support cushion  
Custom upholstery options





# CUSTOM SOLUTIONS

Along with the extensive range of quality education furniture, Workspace also specialises in custom solutions for all areas. Below are just a few of the custom solutions Workspace has been a part of recently however get in touch today to see how our custom solutions can really make your project stand out!

## CUSTOM SHAPED OTTOMANS

Custom shaped ottomans are perfect for breakout areas and when paired with bright coloured fabrics look incredible in all STEM projects.



## CUSTOM CURVE POD

Similar to the Domain booth, these custom made curve pods are the perfect compact work hub for any application. The curve pod allows for single desk space in a private and quiet area whilst still maintaining aesthetics and appeal. Curve pods can be customised for all solutions and areas.



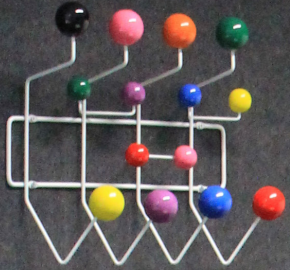
## CUSTOM LABORATORY BENCHES

Our custom designed laboratory benches are the perfect example of precision manufacturing to ensure quality products. These benches were designed by our inhouse planning team alongside the architect to ensure all requirements were met. Custom laboratory benches are perfect for all STEM projects allowing the benches to perfectly fit the space.





# TABLES







## UP

The Up height adjustable gas lift table is the perfect side/conversation table for any space. Its simple design and easy to function height adjustment makes for the perfect break out area companion. Up requires minimal effort to re-position with its quality release lever and smooth gas lift providing a gentle and stable transition between heights. Whether the user is sitting or standing; the up table can be quickly adjusted to suit the user needs.

### Range

Height adjustable table

### Options

Elliptical top or round top  
Laminex parchment,formica  
black or custom finishes with  
matching ABS edge top

### Features

Elliptical steel base with off-centre  
aluminium lifting column  
Black powder coat base and column



## VERVE

The Verve Table is a classic piece that works well in a wide variety of applications. Both modern and functional, Verve Table is solid and can be customised to suit any application

### Range

Side Tables  
Coffee Tables  
Dining Tables

### Options

Side, coffee, dining table options  
Pre-finished board, clear or custom stain  
top options

### Features

Solid oak legs, veneer top,  
2mm solid edge



## BREAK

Australian designed and manufactured by Workspace, Break is the perfect solution for your workplace break out, dining & occasional needs. The collection of square and round tapered timber, three and four leg occasion tables paired with your selection of round, square and rectangular tops; provides the ideal solution to take a break! Choose from the standard range of American White Ash solid timber legs with offset black powder coated bracket, 25mm pre-finished board or veneer top with matching edging. Alternatively, look to customise for your own look and feel.

### Range

Side tables  
Coffee Tables  
Dining Tables

### Options

Coffee or dining table  
Round, square or rectangular top options in  
standard and custom finishes  
Square or round tapered legs  
Clear or stained polish legs  
Black or custom powder coat leg brackets

### Features

Sharknose Edge profile as  
standard (dining table only)  
Solid timber legs





## ASTERISK

Asterisk Tables are offered in powder coated base in your choice of colours and tops in pre-finished board, veneer; with seats in your choice of fabric or leather or vinyl. Customise Asterisk to suit any style and requirement!



### Range

Side table  
Coffee Table  
Hi-bar Table

### Options

Small, large or high table  
Chrome plated, black/white, or custom powder coat base options  
Pre-finished board or veneer top options

### Features

Steel rod frame  
High table bag hook



## LOGOS

The Logos Desk and Workstation series, designed by Tandem Company for Forma 5, takes its form from pure and simple lines that have grown into a comprehensive furniture system. The defining features of the Logos Desk are its trapezoid leg profile and screen brackets which provide the user with a crisp, clean minimal look. The system even in its most basic form, creates an inviting and calm environment.

### Range

Tables  
Desks  
Workstations

### Options

Modesty panel, return, spine screen, worktop mounted screen  
Timber legs  
90 degree workstations  
120 degree pods  
Bench workstations  
Face to face workstations  
Meeting tables

### Features

Trapezoidal leg  
Worktop mounted or leg mounted screen bracket  
Shared leg for bench desks  
Supporting beam



## CULTURE

Breakout areas are well recognised as productive areas of the modern workplace, where informal meetings can produce real benefits, so the role of breakout furniture itself is worth closer attention. The raised level of the Culture Table promotes standing conversation, over project drawings and brewed coffee, or stools can be brought in for longer sessions, still giving people the freedom to move about as they wish.

### Range

Tables

### Options

Brushed stainless steel or custom powder coat base options  
Laminates, melamine, or veneer top options  
Custom dimension options

### Features

Indoor or outdoor suitability  
Shadow line  
Base cross bar  
Adjustable leveling feet





## TETRA

Our Tetra Disc Table provides a solution for situations where style and economy are not mutually exclusive. With its base in stainless steel or polished chrome finish, this table is a perfect fit for educational breakout spaces where maximum space efficiency is required. The heavy 550mm diameter base is suited to tables up to 1200mm diameter, or 1000mm square, and can be used in pairs under longer tables. Couple a Tetra Disc table with a booth or lounge for a simple yet effective breakout setting, or use two Tetra Disc bases for a rectangular meeting table.

### Range

Single or Paired

### Options

Brushed stainless steel  
Chrome plated  
Round or square top  
Veneer Top  
Pre-finished board  
Laminate

### Features

Powdercoat option also available (minimum quantity and extended lead times may apply)  
Optional 450mm high version (minimum quantity and extended lead times may apply)



## DRIVE

Our Drive Desk is a technician height-adjustable solution that gives cost effective outcomes in the majority of workstation and desking fitouts. With capability to be used with a range of screening systems, in a wide choice of colours and top finishes, the Drive desk is a truly versatile and practical solution.

### Range

Desks  
Workstations

### Options

Precious silver pearl, white, or custom powder coat leg options  
Laminates, melamine, and veneer top options

### Features

All steel fabricated components for strength  
Adjustable leveling feet  
Extendable, removable covers for cable management within the leg  
Power and data cable management via cable baskets



## STUDIO

The versatile Studio Desk gives stability and light appearance in its desk configurations, and is height adjustable, so it can be set precisely to suit specific tasks, whether keyboard or writing. It is available off the shelf in white or silver, although other colours are often used. Studio can even be used with castors, and worktops are available in a wide range of pre-finished melamine boards, laminates and veneers.



### Range

Desks  
Workstations

### Options

White or silver options  
Custom powder coat options  
Laminates, melamine, veneer top options  
Castors available

### Features

Welded steel frame  
Technician adjustable





# BALANCE

Our Balance Table series is an architecturally designed and inspired Flip-top stacking and fixed table line that allows one to quickly set up or rearrange multiple room configurations with a single handed operation. Balance Rectangle Table is designed to give businesses the ability to quickly and easily configure a room to meet demands from any user group at any time of the working day.

Range	Options	Features
Fixed tables Flip tables	Offset or centre mounted Glides or castor feet Laminates, melamine, or veneer top options Square, round or rectangle, mobile lecturn Mesh modesty	Flip mechanism with single handed control Twin wheel castors with lock High density nesting capability Table connector



# TRACK

As part of the Track system, our Track Desk is based on one principle – simplicity. With a powdercoated square steel frame, simple geometry is the key to the functionality of the Track Desk system. Coupled with a range of worktop finishes and powdercoat options, the Track Desk can blend into the background or make a bold statement depending on the individual project requirement.

Range	Options	Features
Tables Desks Workstations Straight/back to back/90 and 120 degree configurations	Laminates, melamine, or veneer top options Power/data options Acrylic, whiteboard, echo panel, pinnable, accessory rail frame options	Height adjustable frame Welded steel frame Floating top look Leveling feet



# TRAVEL

Practical, functional and aesthetically clean, Travel is the height adjustable workstation system that allows flexibility not only in its range of vertical movement but also in its application. Electric and winder mechanism options support consistency of movement, whilst quality design and materials provide strength and rigidity to the frame. Providing a consistent look amongst the family, Travel ensures continuity to meet the requirements of all workplace environments.

Range	Options	Features
Straight desk Back to Back 90 degree workstation 120 degree workstation 90 degree pod 120 degree pod	H-Frame or C-Leg config. Electronic or manual winder Power and data options White, black or custom colour frame options Whiteboard, pre-finished, fusion, network, pinnable screen options	Adjustable floor leveling glides Leg mounted cable tray Spine screens



Frame/worktops  
Electrical components









**STORAGE**





## LOCKERS

Made from quality materials and components, the Workspace locker range provides a storage solution that is strong and reliable, capable of withstanding the rigours of usage and exposure to its surrounding environment whilst providing a safe and secure storage option. With a number of customisable options and configurations, including materials, finishes and accessories; the Workspace Locker Range ensures that every need can be catered for making them the perfect solution for all EOT fitouts.

### Range

Left and right z door  
1 door - 5door

### Options

Wet area or office area finishes available  
Multiple lock options  
Laminex multipurpose compact laminate solid colours, laminex melamine solid colours, custom colour finishes available  
Laminex V-Lite- White carcass

### Features

Shelving  
Ventilation  
Hanging rail  
Hat/Coat hook  
5 year warranty



## ALPINE

A staple for the modern office – The Alpine range, with its minimal modern styling and neutral colour is there when you need it, but doesn't demand constant attention. With the additional benefit of being manufactured from E0 low emission board, the Alpine products are suitable for the toughest of regulatory requirements without sacrificing style.

### Range

Tables/Desks/Workstations  
Mobiles  
Laterals  
Credenzas  
Bookcases  
Cupboards

### Options

Non-standard units available on request

### Features

E0 board construction  
Stainless steel handles  
File Storage  
Lockable drawers  
Levelling feet



## BONDI

Another regular choice for office fit outs– The Bondi range, with its minimal modern styling and neutral colour is there when you need it, but doesn't demand constant attention. With the additional benefit of being manufactured from E0 low emission board, bondi products are suitable for the toughest of regulatory requirements without sacrificing style.

### Range

Tables/Desks/Workstations  
Mobiles  
Laterals  
Credenzas  
Bookcases  
Cupboards

### Options

Non-standard units available on request

### Features

E0 board construction  
Stainless steel handles  
File Storage  
Lockable drawers  
Levelling feet



## M COLLECTION

M Collection: The smooth, stylish and functional storage solution for every commercial environment and application. Consistent finish and feel across the Collection family provides a consistent storage solution for all areas of a project. Collection is the perfect range to support your storage needs.

### Range

Mobiles  
Caddies  
Laterals (2 draw to 4 draw)  
Tambours  
Filing Cabinets (3-4 draw)  
Planter boxes

### Options

White, silver or black satin finishes  
Left and right hand configurations  
Pencil tray option for pedestal and caddy  
Custom upholstery seat options for pedestal and caddy

### Features

Solid metal construction  
ABS tambour doors & handles  
Lockable  
Adjustable shelf in tambour section  
Lockable castors









# PROJECTS

## CHRISTIES BEACH HIGH SCHOOL

- d. Hive Ottoman, *see page 20*
- b. Culture Table on Castors, *see page 26*
- c. Plaza Drafting Chair 5 Star base on castors, *see page 13*
- d. Flow Chair chrome frame, *see page 9*
- e. Quadra Stool, *see page 15*
- f. Asterisk Table Round, *see page 26*
- g. Axis Lounge fully upholstered, *see Workspace Website for more details*











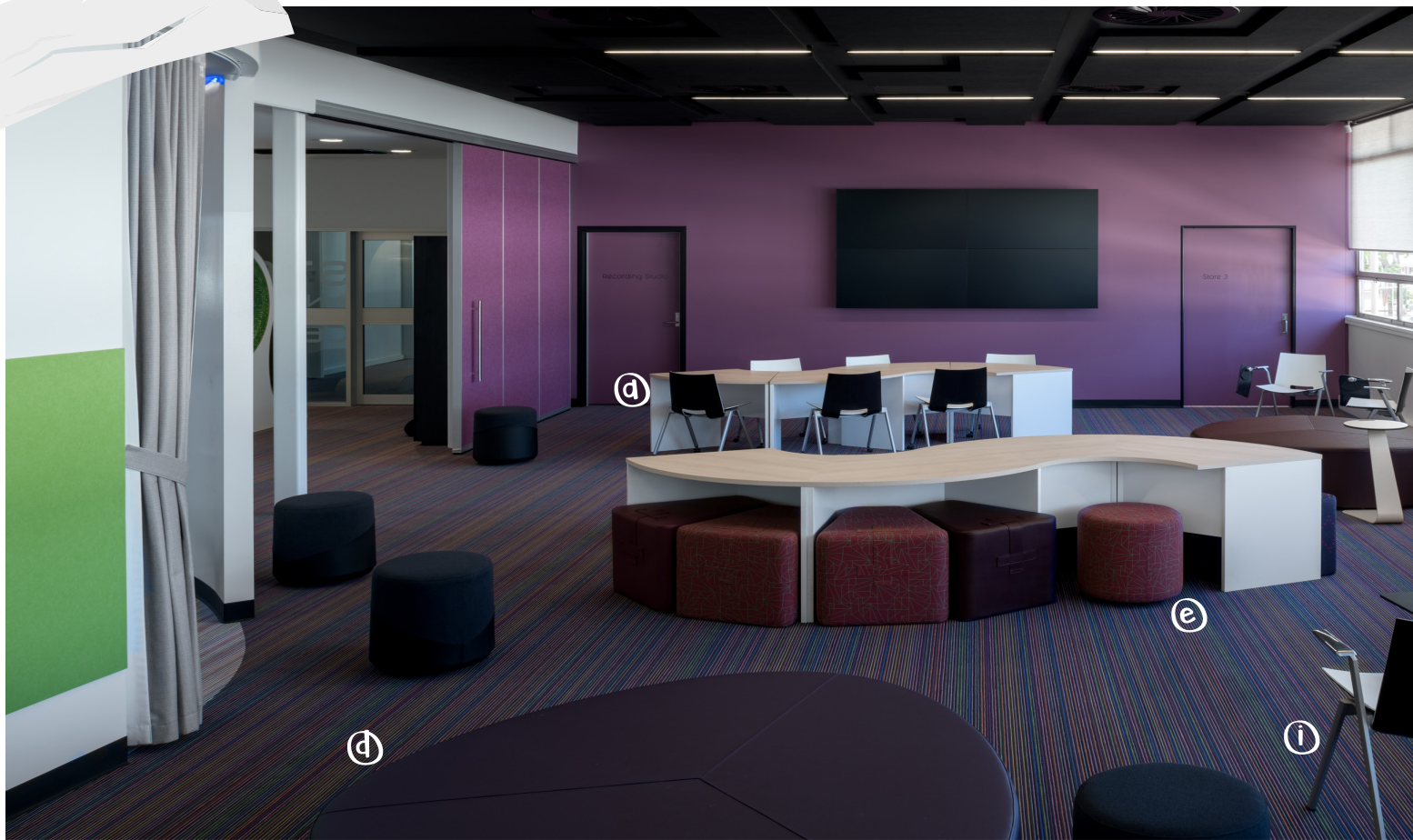
# PROJECTS

## SOUTHERN CROSS UNIVERSITY - LISMORE

- a. Lucky Chair, *see page 8*
- b. Round Balance Table, *see page 28*
- c. Flex Chair, *see page 10*
- d. Break Table, *see page 25*
- e. Tone Chair, *see page 13*
- f. Culture Table, *see page 26*
- g. Travel Table, *see page 28*
- h. Bondi Bookcase, *see page 31*











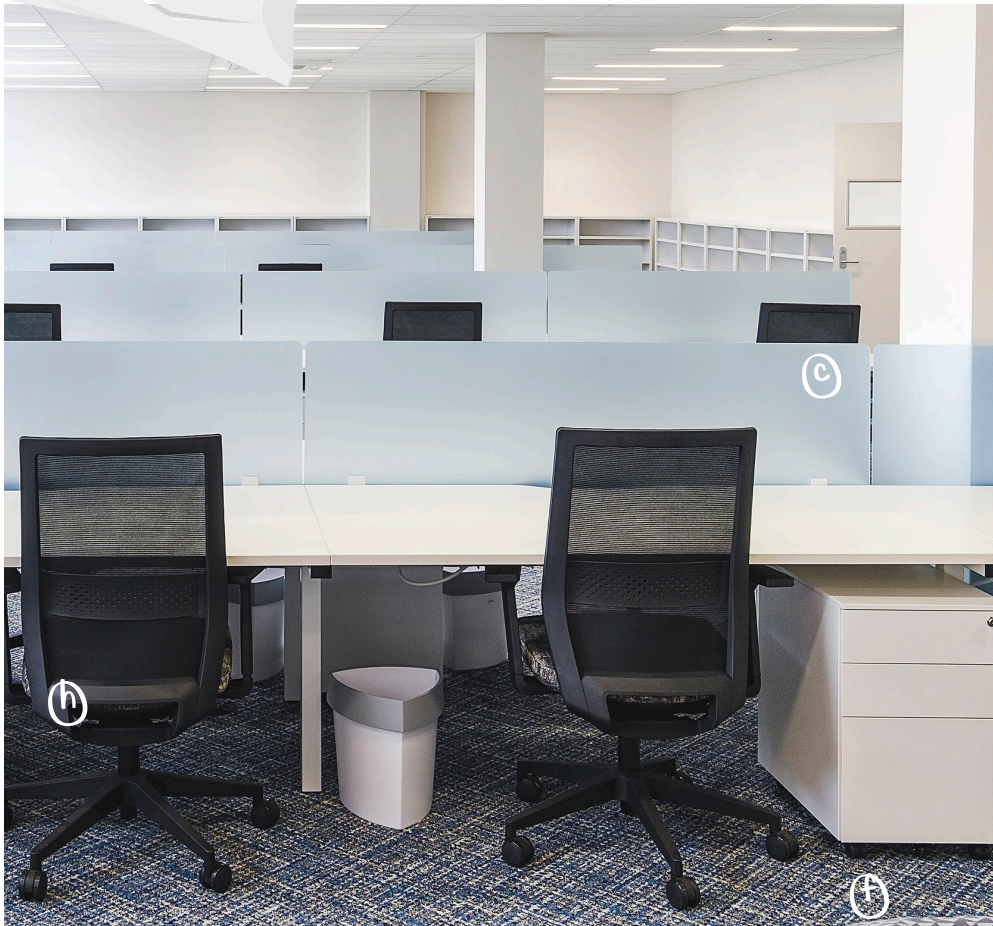
# PROJECTS

## HAMILTON SECONDARY SCHOOL

- a. HL3 Chair, *see page 11*
- b. Culture Table on Castors, *see page 26*
- c. Quadra Stool, *see page 15*
- d. Round Hive Ottoman, *see page 20*
- e. Round Ottoman, *see page 20*
- f. HL3 Swivel on castors with upholstered seat, *see page 11*
- g. Network Workstation, *see Workspace website for more information*
- h. M Collection Mobile, *see page 31*
- i. HL3 Chair with tablet arm, *see page 11*











# PROJECTS

## GRANVILLE TAFE - NSW

- d. Flex Chair, *see page 10*
- b. Plaza Elite Drafting Chairs, *see page 13*
- c. Track Workstations, *see page 28*
- d. Travel Straight Desk, *see page 28*
- e. Focus Lounge, *see Workspace Website for more details*
- f. M Collection Mobile Pedestal, *see page 31*
- g. M Collection Mobile Caddie, *see page 31*
- h. Tone 5 Star base Chair, *see page 13*
- i. Quadra Stool, *see page 15*









# PROJECTS

## SWINBURNE UNIVERSITY - LATELAB

- a. Asterisk Stool upholstered seat, *see page 16*
- b. Asterisk Coffee Table, *see page 26*
- c. Asterisk Side Table, *see page 26*
- d. Room Booth Double Seat, *see page 23*
- e. Track Desk, *see page 28*
- f. Olea Lounge, *see Workspace Website for more information*
- g. Hive Ottoman upholstered, *see page 20*





# EDUCATIONAL SECTOR

The Education segment is one of the most rapidly evolving commercial environments across Australia today. Advances in technology and communications have driven education from a local context to a global context. Traditional education models of primary, secondary and tertiary environments have made way for educational institutions that operate across a variety of age groups, subject matters and physical environments.

Workspace Commercial Furniture has had a long and successful relationship with education design specialist, builders, facilities managers and the institutional providers themselves. Working proactively with these stakeholders, Workspace has moved to develop product ranges that meet the formal teaching and lecture environment and accommodate the modern open plan break out space. Education furniture and fit out has become more than a necessity to accommodate students, staff and guests. The design, layout and colour of the education fit out and furniture is a statement about the calibre of the institution and key selling point for prospective students. At Workspace we understand this, and work collaboratively with clients and suppliers to bring to life education spaces with furniture that is practical, durable and inviting to all. Similar to our commitment to office environments, Workspace understand that the education furniture needs to promote an environment of participation and cultural collectivism.







Workspace Commercial Furniture has been committed to providing the ideal balance of commercial furniture products to suite the various spaces that encapsulate education environments. Through are national and international partnerships Workspace brings the best of European and Australian design to market with the quality of Australian manufacturing. Moreover our investment in production provides the size and scale for custom and bespoke furniture to complement our standard ranges of seating, chairs, tables and workstations.

Our commitment to local manufacturing aligns with our belief of quality product and end to end service. Workspace ensures that our products are designed and manufactured to handle the sometimes harsh treatment experienced in education spaces. With education segment fit out timelines becoming ever shortened, campus size and location numbers increasing, Workspace Commercial Furniture recognize the education segments requirements. Our integrated project approach ensures we work in a collaborative framework with education segment designers and clients to deliver education furniture that complement the design, provide function and integration with the technology used to delivery the education of today to the minds of tomorrow.



# WORKSPACE COMMERCIAL FURNITURE

One of Australia's most respected manufacturers; Workspace Commercial Furniture commenced in 1911 and has continued to revolutionise for over 108 years to meet the changing needs of their clients and the market. Workspace is a leader in design and manufacture of commercial, educational, hospitality, health and aged care furniture specialising in project based solutions.

Workspace has showrooms located in Sydney, Melbourne, Adelaide, Canberra & Brisbane and a 12,500 square metre ISO9001 & ISO14001 certified manufacturing facility in South Australia. With over 150 employees, Workspace has the experience and capability to undertake projects of any size nationally and internationally.

The company's strength lies in its end to end service. Here, Workspace controls product design and development, planning, local manufacture, right through to despatch, freight and installation. Workspace works with its clients to achieve an industry leading turnkey service.

*Workspace's commitment to Australian manufacturing has resulted in partnerships with European supply partners that ensure consistent design aesthetic with quality inputs, manufacturing and value added occurring in Australia.*





In addition, Workspace is committed to the promotion of Australian commercial furniture design. Through our extensive industry partnerships, Workspace has sought to bring the best of Australian design to market. We actively seek to work with designers and firms to highlight the design expertise and access to Australian manufacturing. In conjunction with external design partners, and coupled with our internal product development design team, Workspace is also proud to offer an extensive range of AFRDI certified products thus proving strength, durability, stability and function.

Workspace is committed to an environmental and sustainable approach and understands the importance of continuing to improve their environmental impact. Consequently, Workspace endeavours to be an environmentally responsible commercial furniture and interiors supplier and currently have an extensive range of furniture that meets the markets needs for sustainability.

Workspace is proud of its South Australian heritage and as Australia's largest diversified commercial furniture manufacturer is proactive in ensuring future growth nationally and internationally from its base in South Australia.

Workspace operates under strict guidelines and prides the company on the following accreditations



Supplier on scheme  
Office Furniture  
01/11/2014 - 01/11/2019



ecovadis





# MAKE. SPACE. WORK.

Workspace Sydney  
Unit 4, Harcourt Estate  
809-821 Botany Road  
+61 2 9381 2300

Workspace Melbourne  
87-89 Queensbridge Street  
Southbank VIC 3006  
+61 3 9686 1311

Workspace Adelaide  
54 Jose Street  
Melrose Park SA 5039  
+61 8 8374 8900

Workspace Canberra  
Unit 4, 41-43 Townsville Street  
Fyshwick ACT 2609  
+61 2 6280 7708

Workspace Brisbane  
Unit 1, 36 Doggett Street  
Newstead, QLD 4006  
+61 7 3252 2268

**workspace**  
commercial furniture

[www.workspace.com.au](http://www.workspace.com.au)